



# Road Safety in Greece

**George Yannis**, Professor



Department of Transportation Planning and Engineering,  
National Technical University of Athens, Greece



# Road Safety Performance in Greece

- The most impressive road safety improvement in the EU during the last decade: **51%** road fatalities decrease
- 2018 fatality rate (**64 deaths per million inhabitants**) is now closer to the EU average
- **690 fatalities** (-5,6%) in 2018: the best ever performance since 1965; only 61 lives to be saved to reach the 2020 target

George Yannis, Road Safety in Greece

Greece 2008 - 2018

## Basic road safety figures



www.nrso.ntua.gr

	2008	2009	2010	2011	2012	2013	2014	2015	2016	2017	2018	2018/2008
Injury Road accidents	15,083	14,789	15,032	13,849	12,398	12,109	11,690	11,440	11,318	10,848	10,740	-29%
Fatalities	1,553	1,456	1,258	1,141	988	879	795	793	824	731	690	-56%
Serious Injuries	1,872	1,676	1,709	1,626	1,399	1,212	1,016	999	879	706	748	-60%
Slight Injuries	17,138	16,965	17,399	15,633	14,241	13,963	13,548	13,097	12,946	12,565	12,243	-29%
Vehicle Fleet (x1000)	7,729	7,911	8,062	8,087	8,070	8,035	8,048	8,076	8,173	8,263	8,407	9%
Fatalities per million vehicles	201	184	156	141	122	109	99	98	101	88	83	-59%
Speed infringements	349,417	330,186	263,382	238,033	186,675	178,816	156,892	173,476	176,592	214,132	237,687	-32%
Drink & drive infringements	47,257	45,901	38,033	34,992	30,707	30,853	29,597	29,191	33,192	33,620	35,099	-26%
Seat belt infringements	86,353	77,274	49,703	37,120	33,722	35,478	34,526	29,611	34,831	32,500	31,395	-64%
Helmet infringements	94,530	78,453	51,526	47,250	47,736	58,122	54,354	52,783	63,971	60,142	51,903	-45%



European Union 2009 - 2018

## Road fatalities per million population



www.nrso.ntua.gr

	2009	2010	2011	2012	2013	2014	2015	2016	2017	2018	2009-2018
AT	76	66	62	63	54	51	56	50	47	45	-40.8%
BE	88	77	80	69	65	65	65	56	54	52	-40.9%
BG	121	105	89	82	83	91	98	99	96	88	-27.3%
CY	89	73	85	59	51	52	67	54	62	57	-36.0%
CZ	86	77	67	71	62	65	70	58	55	62	-27.9%
DE	51	45	50	45	41	42	43	39	39	39	-23.5%
DK	55	48	40	30	34	32	31	37	30	30	-45.5%
EE	75	59	76	66	61	59	51	54	36	31	-58.0%
ES	59	52	44	41	36	36	36	39	39	39	-33.9%
FI	52	50	54	47	48	42	49	47	42	43	-17.3%
FR	66	62	61	56	50	51	52	54	51	48	-27.3%
GR	131	111	103	89	80	73	73	76	69	64	-51.2%
HR	127	99	97	92	86	73	82	73	80	77	-39.4%
HU	82	74	64	61	60	63	65	62	64	64	-22.0%
IE	53	46	41	35	41	42	36	39	33	31	-41.5%
IT	72	66	64	63	57	56	56	54	56	55	-23.6%
LT	116	95	97	101	86	91	83	66	67	61	-47.4%
LU	97	64	64	65	84	64	64	56	42	60	-38.1%
LV	117	101	86	88	99	106	95	80	70	78	-33.3%
MT	51	36	51	22	40	24	26	51	41	38	-25.5%
NL	44	39	40	34	28	28	31	31	31	31	-29.5%
PL	120	103	110	94	88	84	77	80	75	76	-36.7%
PT	80	80	74	68	61	61	57	54	58	59	-26.3%
RO	137	117	100	102	91	91	95	97	99	96	-29.9%
SE	39	28	34	30	27	28	27	27	25	22	-43.6%
SI	64	67	69	63	61	52	58	63	50	44	-47.4%
SK	71	69	61	65	46	54	51	51	51	46	-35.2%
UK	38	31	31	28	28	29	28	28	28	28	-26.3%
EU	71	63	61	56	51	51	51	50	49	49	-31.0%

Issued: April 10th, 2019  
About the data: www.nrso.ntua.gr/wp-content/uploads/nrso-data-eu.pdf  
Sources: European Commission  
Processing: NTUA - Road Safety Observatory

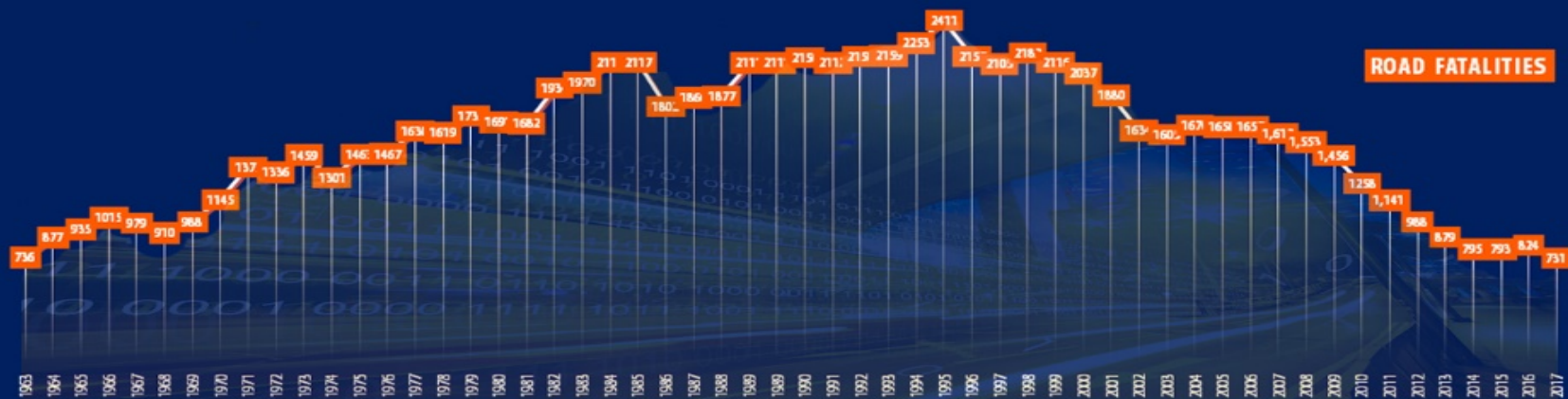




## Road Fatalities Basic Characteristics



	1991	1992	1993	1994	1995	1996	1997	1998	1999	2000	2001	2002	2003	2004	2005	2006	2007	2008	2009	2010	2011	2012	2013	2014	2015	2016	2017	2017	Change 2007 - 2017	
Total road fatalities	2,112	2,158	2,159	2,253	2,411	2,157	2,105	2,182	2,116	2,037	1,880	1,634	1,605	1,670	1,658	1,657	1,612	1,553	1,456	1,258	1,141	988	879	795	793	824	731	100%	-55%	
Pedestrians killed	473	464	498	479	481	422	409	417	399	375	338	279	257	293	234	267	255	248	202	179	223	170	151	125	128	149	118	16%	-54%	
Motorcyclists killed	316	316	320	367	391	419	392	455	453	406	426	341	310	379	399	440	420	394	405	367	305	282	271	278	237	240	216	30%	-49%	
Moped riders killed	177	185	211	205	237	122	114	114	108	90	77	55	53	55	58	57	43	41	28	36	34	35	25	20	32	25	32	4%	-26%	
Cyclists killed	24	27	37	28	34	28	32	34	23	22	29	14	21	24	18	21	16	22	15	23	13	21	15	19	11	18	11	2%	-31%	
Killed in accidents with HGV	210	196	188	185	233	184	186	210	208	148	174	175	188	154	134	133	116	114	91	102	68	49	65	62	50	61	46	6%	-60%	
Young drivers killed (18-24)	277	308	301	319	295	273	268	270	268	241	263	188	202	198	225	221	186	186	171	134	109	94	74	82	72	67	72	10%	-61%	
Older drivers killed (65+)	74	81	104	107	136	117	140	160	148	153	158	127	126	128	128	130	138	132	124	130	97	124	116	93	117	114	99	14%	-28%	
Children killed (0-14)	73	68	72	81	70	75	71	56	54	40	47	47	45	43	44	36	42	35	43	30	22	21	17	10	6	19	12	2%	-71%	
Men drivers killed	1,066	1,142	1,158	1,191	1,299	1,133	1,137	1,181	1,157	1,122	1,064	921	958	951	986	1,021	945	956	919	778	661	618	538	505	514	509	481	66%	-49%	
Women drivers killed	47	41	50	65	60	73	60	77	69	70	65	56	50	65	65	53	64	64	44	60	52	33	44	35	31	39	26	4%	-59%	
Non national drivers killed	50	63	85	86	91	94	109	100	124	129	136	112	109	111	116	127	118	129	131	109	107	76	53	69	49	55	53	7%	-55%	
Non national riders killed	19	14	18	24	30	40	41	59	71	67	77	57	40	58	58	73	48	59	56	51	49	33	25	40	34	27	27	4%	-44%	
Inside built up areas	971	933	977	956	999	915	678	746	748	694	830	718	716	766	758	774	724	744	646	593	559	499	464	401	388	427	340	47%	-53%	
Outside built up areas	1,141	1,225	1,182	1,297	1,411	1,242	1,427	1,436	1,368	1,343	1,050	916	889	904	900	883	888	809	810	665	582	489	415	394	405	397	391	53%	-56%	
In junctions - Inside built up areas	-	-	-	-	-	-	337	268	283	271	262	272	244	201	209	210	222	191	196	151	169	140	154	139	132	107	127	120	16%	-37%
In junctions - Outside built up areas	-	-	-	-	-	142	240	224	211	190	163	112	101	96	93	101	78	69	83	77	54	65	35	51	49	28	50	7%	-36%	
On motorways	-	-	1	2	1	148	72	61	105	61	86	69	58	116	111	147	140	120	108	87	81	57	79	56	53	45	54	7%	-61%	
When raining	302	256	191	316	293	317	258	259	245	194	187	176	204	174	192	146	163	138	181	149	119	99	68	103	82	64	63	9%	-61%	
During daylight	1,075	1,029	1,074	1,115	1,146	1,059	1,113	1,131	1,116	1,049	983	873	782	832	875	870	882	825	789	675	609	527	473	431	418	448	419	57%	-52%	
During nighttime	922	1,018	963	1,001	1,100	976	878	943	897	872	793	676	714	741	701	715	649	632	608	523	484	402	366	311	335	339	277	38%	-57%	
Killed in single vehicle accidents	1,134	1,166	1,153	1,207	1,257	1,094	1,105	1,155	1,104	1,078	976	809	817	879	850	900	852	812	737	662	657	590	530	429	463	473	419	57%	-51%	
Annual change of total fatalities		2.2%	0.1%	4.3%	7.0%	-10.5%	-2.4%	3.7%	-3.0%	-3.7%	-7.7%	-13.1%	-1.8%	4.0%	-0.7%	-0.1%	-2.7%	-3.7%	-6.2%	-13.6%	-9.3%	-13.4%	-11.0%	-9.6%	-0.3%	3.9%	-11.3%			
Severity	10.2	9.8	9.7	10.1	10.6	9.1	8.7	8.8	8.7	8.9	9.6	9.7	10.2	10.7	9.8	10.3	10.4	10.3	9.8	8.4	8.2	8.0	7.3	6.8	6.9	7.3	6.7			



Notes: Severity: fatalities / 100 injury accidents

Issued: February 5th, 2019

About the data: [www.nrso.ntua.gr/wp-content/uploads/nrso-data-gr-1.pdf](http://www.nrso.ntua.gr/wp-content/uploads/nrso-data-gr-1.pdf)

Sources: Hellenic Statistical Authority (ELSTAT)

Processing: NTUA - Road Safety Observatory



# Road Safety Measures in Greece

➤ Not too much enforcement effort; part of the fatalities reduction attributed to the **economic crisis**; however, several **positive activities** contributed to this spectacular safety improvement:

- **great improvement of the main road network** (from 750km of motorways in 2007 to 2.200 km in 2018)
- several Local Authorities implemented **city mobility and safety plans**
- implementation of all **EU Directives** and all procedures is always tighter
- **new traffic fines scheme** (2018) based on infringement safety importance and offenders' income
- introduction of **vehicle control inspection run by private entities**; very efficient against corruption
- massive and very efficient **campaigns, training and other activities** (mainly by IOAS Road Safety Institute)
- the **scientific community** (NTUA, HIT, HITE) supports systematically decision makers, stakeholders, society

as a result:

the Greek drivers changed significantly their behavior, initially triggered by the crisis, but they maintain it also as a result of the **constantly improving road safety culture**





# Road Safety in Greece

**George Yannis**, Professor



Department of Transportation Planning and Engineering,  
National Technical University of Athens, Greece