

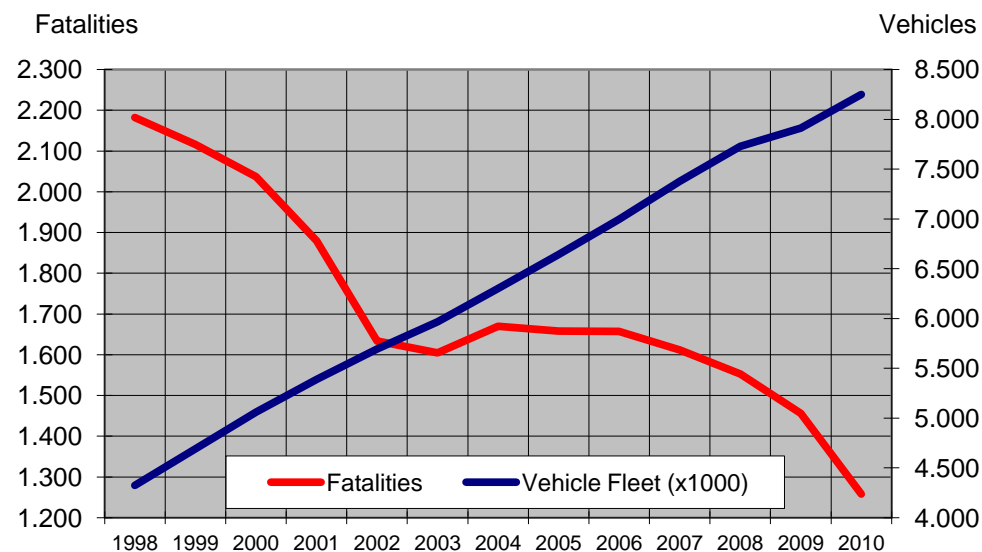
gr1. Basic road safety figures, Greece 1998 - 2010

	1998	1999	2000	2001	2002	2003	2004	2005	2006	2007	2008	2009	2010	2010/2000
Injury Road accidents	24.819	24.231	23.001	19.671	16.809	15.751	15.509	16.914	16.019	15.499	15.083	14.789	15.032	-34,6%
Fatalities	2.182	2.116	2.037	1.880	1.634	1.605	1.670	1.658	1.657	1.612	1.553	1.456	1.258	-38,2%
Serious Injuries	4.720	4.558	4.200	3.238	2.608	2.348	2.395	2.270	2.021	1.821	1.872	1.676	1.709	-59,3%
Slight Injuries	29.001	28.148	26.563	23.098	19.851	18.389	17.784	19.778	18.654	17.945	17.138	16.965	17.399	-34,5%

Vehicle Fleet (x1000)	4.323	4.690	5.061	5.390	5.693	5.968	6.302	6.641	6.996	7.380	7.729	7.911	8.249	63,0%
Fatalities per vehicles	505	451	402	349	287	269	265	250	237	218	201	184	153	-62,1%

Speed infringements	92.122	97.947	175.075	316.451	418.421	447.349	382.970	374.712	307.763	353.133	349.417	330.186	263.382	50,4%
Drink & drive infringements	13.996	17.665	30.507	49.464	48.947	45.546	40.986	46.938	44.848	45.668	47.257	45.901	38.033	24,7%
Drink & drive controls	202.161	246.611	365.388	710.998	1.034.502	1.271.273	1.281.102	1.376.307	1.317.268	1.433.865	1.509.092	1.660.797	1.818.849	397,8%
Seat belt infringements	40.370	60.708	63.061	98.486	171.070	188.927	148.878	142.227	142.152	107.112	86.353	77.274	49.703	-21,2%
Helmet infringements	65.123	81.234	81.252	151.909	235.915	216.519	166.493	150.198	144.251	97.953	94.530	78.453	51.526	-36,6%

- During the last decade, road fatalities in Greece have decreased by 38%, whereas serious injuries decreased by 59%
- The rate fatalities per number of vehicles has decreased the same period by 60%
- This high fatalities rate is also explained by the high increase of the vehicle fleet in Greece during the same period
- Increase in Police enforcement was found correlated to the road fatalities decrease



Issued : October 19th, 2011

About the data : [nrso-data-gr.pdf](#)

Sources : [Hellenic Statistical Authority \(ELSTAT\)](#) [Ministry of Infrastructure Police](#)

Processing : [National Technical University of Athens - Road Safety Observatory](#)