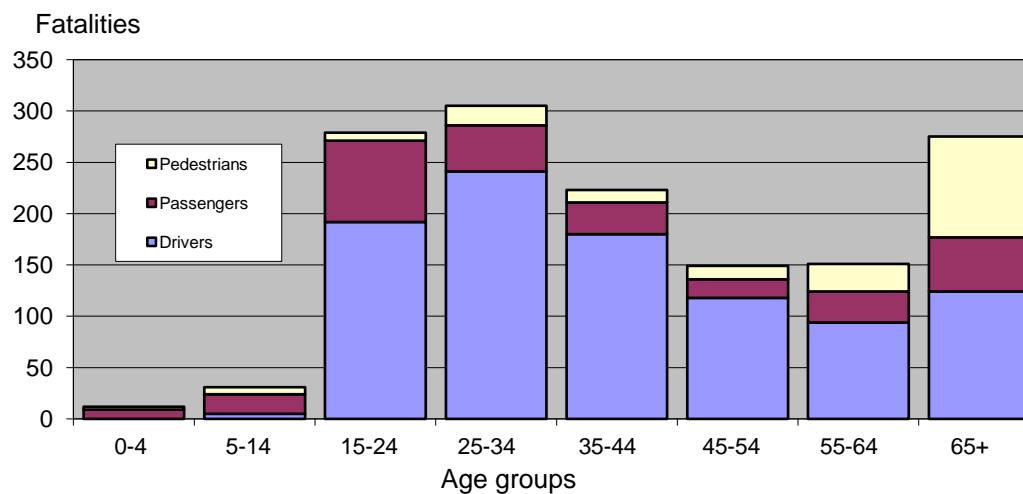


gr3. Road fatalities by age, gender, road user type, Greece 2009

Age	Drivers		Passengers		Pedestrians		Drivers	Passengers	Pedestrians	Male	Female	Total	%	Severity
	Male	Female	Male	Female	Male	Female								
0-4			3	6	1	2	0	9	3	4	8	12	1%	6,0
5-14	5		10	9	3	4	5	19	7	18	13	31	2%	4,6
15-24	186	6	52	27	6	2	192	79	8	244	35	279	19%	5,0
25-34	228	13	26	19	14	5	241	45	19	268	37	305	21%	3,8
35-44	168	12	18	13	11	1	180	31	12	197	26	223	15%	3,8
45-54	111	7	10	8	8	5	118	18	13	129	20	149	10%	3,4
55-64	92	2	9	21	20	7	94	30	27	121	30	151	10%	5,4
65+	120	4	23	30	59	39	124	53	98	202	73	275	19%	8,1
Unknown	9	1	3	3	8	7	10	6	15	20	11	31	2%	
Total	919	45	154	136	130	72	964	290	202	1.203	253	1.456	100%	
%	95%	5%	53%	47%	64%	36%	66%	20%	14%	83%	17%			
Severity	4,4	1,2	8,1	5,1	9,5	5,3	4,0	6,3	7,4	5,0	3,3			

- Male drivers account for more than 60% of all road fatalities in Greece
- Young male drivers account for more than 50% of male driver fatalities
- Older drivers account for more than 50% of pedestrian fatalities



Notes: Severity: fatalities / 100 injury accidents

Issued: October 30th, 2010

About the data: nrso-data-gr.pdf

Sources: [Hellenic Statistical Authority \(ELSTAT\)](http://Hellenic Statistical Authority (ELSTAT))

Processing: National Technical University of Athens - Road Safety Observatory