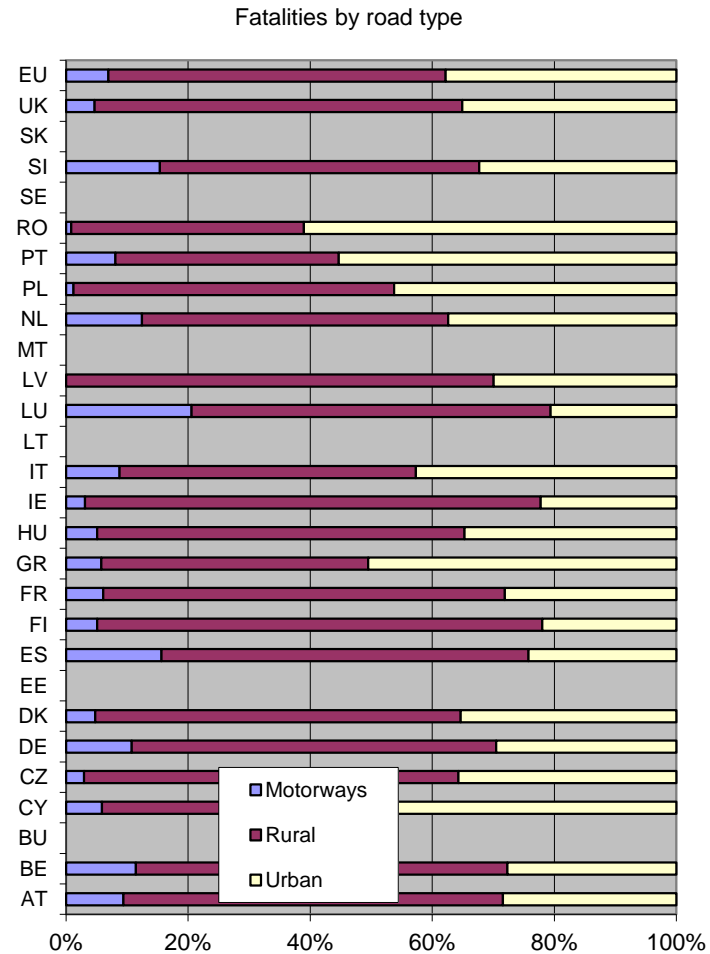


eu3. Road fatalities by road type, European Union 2012

	Motorway	Rural	Urban	Total
AT	50	330	151	531
BE	88	469	213	770
BU				
CY	3	17	31	51
CZ	22	455	265	742
DE	387	2,151	1,062	3,600
DK	8	100	59	167
EE				
ES	298	1,144	461	1,902
FI	13	186	56	255
FR	222	2,404	1,027	3,653
GR	57	432	499	988
HU	31	364	210	605
IE	5	121	36	162
IT	330	1,821	1,602	3,753
LT				
LU	7	20	7	34
LV	0	124	53	177
MT				
NL	70	282	210	562
PL	44	1,875	1,652	3,571
PT	58	263	397	718
RO	17	779	1,246	2,042
SE				
SI	20	68	42	130
SK				
UK	84	1,086	632	1,802
EU	1,814	14,491	9,911	26,215



Issued : January 1st, 2015

About the data : [nrso-data-eu.pdf](#)

Sources : [CARE](#)

Processing : [National Technical University of Athens - Road Safety Observatory](#)

- In EU-23, only 7% of road fatalities occurred in motorways
- 55% of road fatalities occurred on non motorway rural roads
- In Greece, more road fatalities occurred on urban than rural roads