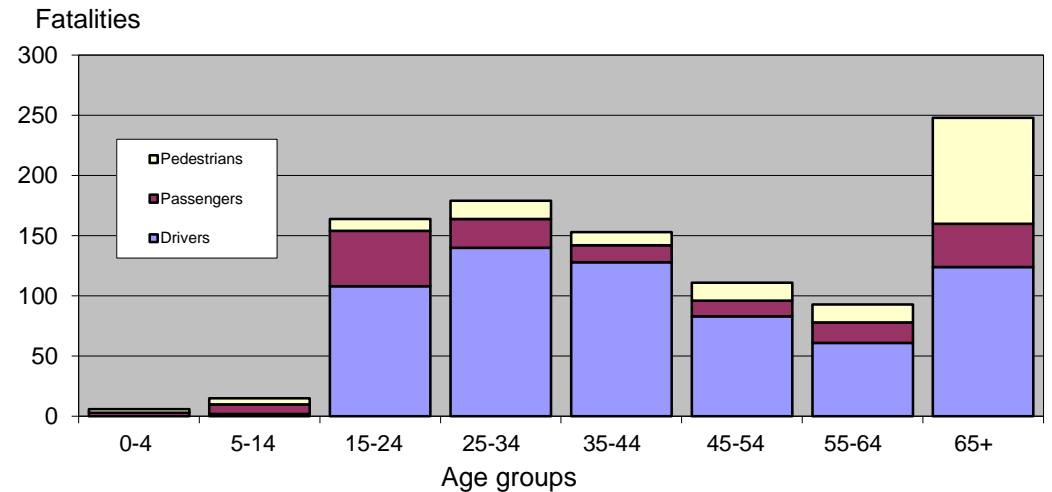


gr3. Road fatalities by age, gender, road user type, Greece 2012

Age	Drivers		Passengers		Pedestrians		Drivers	Passengers	Pedestrians	Male	Female	Total	%	Severity
	Male	Female	Male	Female	Male	Female								
0-4	0	0	0	3	2	1	0	3	3	2	4	6	1%	3.4
5-14	2	0	4	4	3	2	2	8	5	9	6	15	2%	2.6
15-24	104	4	30	16	8	2	108	46	10	142	22	164	17%	4.0
25-34	132	8	15	9	12	3	140	24	15	159	20	179	18%	3.0
35-44	114	14	10	4	9	2	128	14	11	133	20	153	15%	3.0
45-54	78	5	4	9	8	7	83	13	15	90	21	111	11%	2.8
55-64	61	0	7	10	7	8	61	17	15	75	18	93	9%	3.6
65+	122	2	11	25	47	41	124	36	88	180	68	248	25%	7.6
Unknown	5	0	5	1	6	2	5	6	8	16	3	19	2%	
Total	618	33	86	81	102	68	651	167	170	806	182	988	100%	
%	95%	5%	51%	49%	60%	40%	66%	17%	17%	82%	18%			
Severity	3.5	1.0	5.6	3.6	8.4	5.5	3.1	4.4	7.0	3.9	2.7			

- Male drivers account for 95% of all road fatalities in Greece
- Young male drivers account for 16% of male driver fatalities
- Older pedestrians account for more than half of pedestrian fatalities



Notes : Severity: fatalities / 100 injury accidents

Issued : October 1st, 2014

About the data : [nrso-data-gr.pdf](#)

Sources : [Hellenic Statistical Authority \(ELSTAT\)](#)

Processing : [National Technical University of Athens - Road Safety Observatory](#)