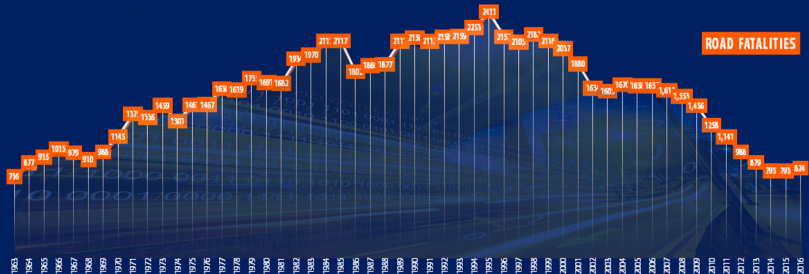
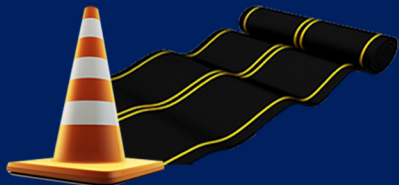




	1991	1992	1993	1994	1995	1996	1997	1998	1999	2000	2001	2002	2003	2004	2005	2006	2007	2008	2009	2010	2011	2012	2013	2014	2015	2016	2016	Change 2006 - 2016	
Total road fatalities	2,112	2,158	2,159	2,253	2,411	2,157	2,105	2,182	2,116	2,037	1,880	1,634	1,605	1,670	1,658	1,657	1,612	1,553	1,456	1,258	1,141	988	879	795	793	824	100%	-50%	
Pedestrians killed	473	464	498	479	481	422	409	417	399	375	338	279	257	293	234	267	255	248	202	179	223	170	151	125	128	149	18%	-44%	
Motorcyclists killed	316	316	320	367	391	419	392	455	453	406	426	341	310	379	399	440	420	394	405	367	305	282	271	278	237	240	29%	-45%	
Moped riders killed	177	185	211	205	237	122	114	114	108	90	77	55	53	55	58	57	43	41	28	36	34	35	25	20	32	25	3%	-56%	
Cyclists killed	24	27	37	28	34	28	32	34	23	22	29	14	21	24	18	21	16	22	15	23	13	21	15	19	11	18	2%	-14%	
Killed in accidents with HGV	210	196	188	185	233	184	186	210	208	148	174	175	188	154	134	133	116	114	91	102	68	49	65	62	50	61	7%	-54%	
Young drivers killed (18-24)	277	308	301	319	295	273	268	270	268	241	263	188	202	198	225	221	186	186	171	134	109	94	74	82	72	67	8%	-70%	
Young riders killed (15-24)																													
Older drivers killed (65+)	74	81	104	107	136	117	140	160	148	153	158	127	126	128	128	130	138	132	124	130	97	124	116	93	117	114	14%	-12%	
Children killed (0-14)	73	68	72	81	70	75	71	56	54	40	47	47	45	43	44	36	42	35	43	30	22	21	17	10	6	19	2%	-47%	
Men drivers killed	1,066	1,142	1,158	1,191	1,299	1,133	1,137	1,181	1,157	1,122	1,064	921	958	951	986	1,021	945	956	919	778	661	618	538	505	514	509	62%	-50%	
Women drivers killed	47	41	50	65	60	73	60	77	69	70	65	56	50	65	65	53	64	64	44	46	52	33	44	35	31	39	5%	-26%	
Non national drivers killed	50	63	85	86	91	94	109	100	124	129	136	112	109	111	116	127	118	129	131	109	107	76	53	69	49	55	7%	-57%	
Non national riders killed	19	14	18	24	30	40	41	59	71	67	77	57	40	58	58	73	48	59	56	51	49	33	25	40	34	27	3%	-63%	
Inside built up areas	971	933	977	956	999	915	678	746	748	694	830	718	716	766	758	774	724	744	646	593	559	499	464	401	388	427	52%	-45%	
Outside built up areas	1,141	1,225	1,182	1,297	1,411	1,242	1,427	1,436	1,368	1,343	1,050	916	889	904	900	883	888	809	810	665	582	489	415	394	405	397	48%	-55%	
In junctions - Inside built up areas	-	-	-	-	-	-	337	268	283	271	262	272	244	201	209	210	222	191	196	151	169	140	154	139	132	107	127	15%	-43%
In junctions - Outside built up areas	-	-	-	-	-	-	142	240	224	211	190	163	112	101	96	93	101	78	69	83	77	54	65	35	51	49	28	3%	-72%
On motorways	-	-	1	2	1	148	72	61	105	61	86	69	58	116	111	147	140	120	108	87	81	57	79	56	53	45	5%	-69%	
When raining	302	256	191	316	293	317	258	259	245	194	187	176	204	174	192	146	163	138	181	149	119	99	68	103	82	64	8%	-56%	
During daylight	1,075	1,029	1,074	1,115	1,146	1,059	1,113	1,131	1,116	1,049	983	873	782	832	875	870	882	825	789	675	609	527	473	431	418	448	54%	-49%	
During nighttime	922	1,018	963	1,001	1,100	976	878	943	897	872	793	676	714	741	701	715	649	632	608	523	484	402	366	311	335	339	41%	-53%	
Killed in single vehicle accidents	1,134	1,166	1,153	1,207	1,257	1,094	1,105	1,155	1,104	1,078	976	809	817	879	850	900	852	812	737	662	657	590	530	429	463	473	57%	-47%	
Annual change of total fatalities		2.2%	0.1%	4.3%	7.0%	-10.5%	-2.4%	3.7%	-3.0%	-3.7%	-7.7%	-13.1%	-1.8%	4.0%	-0.7%	-0.1%	-2.7%	-3.7%	-6.2%	-13.6%	-9.3%	-13.4%	-11.0%	-9.6%	-0.3%	3.9%			
Severity	10.2	9.8	9.7	10.1	10.6	9.1	8.7	8.8	8.7	8.9	9.6	9.7	10.2	10.7	9.8	10.3	10.4	10.3	9.8	8.4	8.2	8.0	7.3	6.8	6.9	7.3			



Notes: Severity: fatalities / 100 injury accidents
 Issued: January 2nd, 2018
 About the data: www.nrso.ntua.gr/wp-content/uploads/nrso-data-gr-1.pdf
 Sources: Hellenic Statistical Authority (ELSTAT)
 Processing: NTUA - Road Safety Observatory